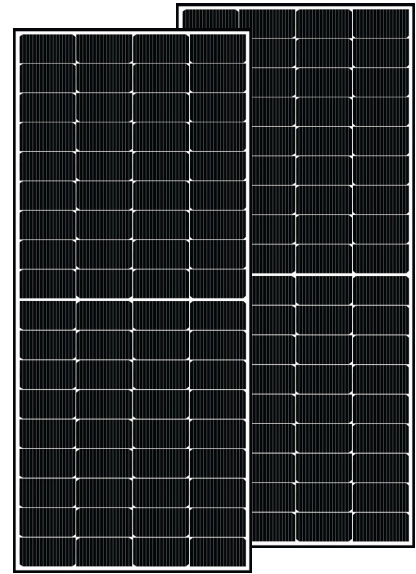


# Mono 182N 72 HALF CELLS 310W

## HALF-CELL BIFACIAL MODULE N-TYPE TOPCON

TYPE: ARM-72-310P+30%



POWER OUTPUT

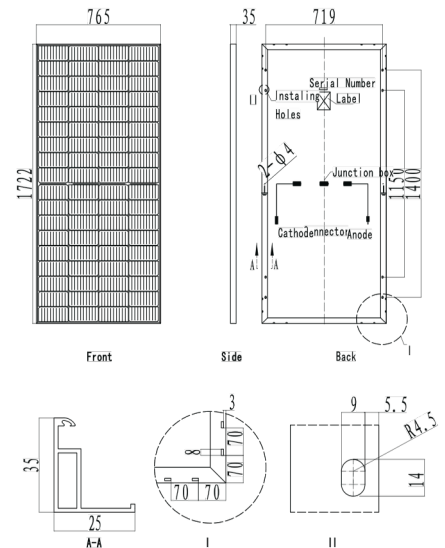
**310W**

MAX EFFICIENCY

**21.8%**

### Mechanical Characteristics

Solar Cell	Monocrystalline silicon 182mmX91mm
No. of Cells	72(4x 18)
Dimensions	1722x 765x35mm (67.8x30.12x1.38 inches)
Weight	13.1 kgs
Front Glass	3.2 mm (0.126 inches) fully tempered glass
Output Cables	4.0 mm <sup>2</sup> , (-) 900 mm (+) 160 mm in length or customized length
Junction Box	IP68 rated (3 bypass diodes)
Operating Module Temperature	-40 °C to +85 °C
Maximum System Voltage	1000V DC (IEC)
Maximum Series Fuse Rating	20 A
Power Tolerance	0/+5W



### Electrical Characteristics

Module Type	ARM-72-
Testing Condition	310P+30% STC
Maximum Power (P <sub>max</sub> /W)	310
Optimum Operating Voltage (V <sub>mp</sub> /V)	21.75
Optimum Operating Current (I <sub>mp</sub> /A)	13.11
Open Circuit Voltage (V <sub>oc</sub> /V)	25.85
Short Circuit Current (I <sub>sc</sub> /A)	13.72
Module Efficiency (%)	21.8

STC: Irradiance 1000W/m<sup>2</sup>, module temperature 25 °C, AM=1.5; NMOT: Irradiance 800W/m<sup>2</sup>, ambient temperature 20 °C, AM=1.5, wind speed 1 m/s; Tolerance of P<sub>max</sub> is within +/- 3%;

### Packing Configuration

Container	40' HQ
Pieces per Carton	2PCS/Carton
Carton per container	715
Pieces per container	1430
Packaging box dimensions	1732x775x80 mm
Packaging box weight	27 kg