

585W-36V-MHD-144 CELL

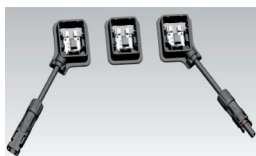
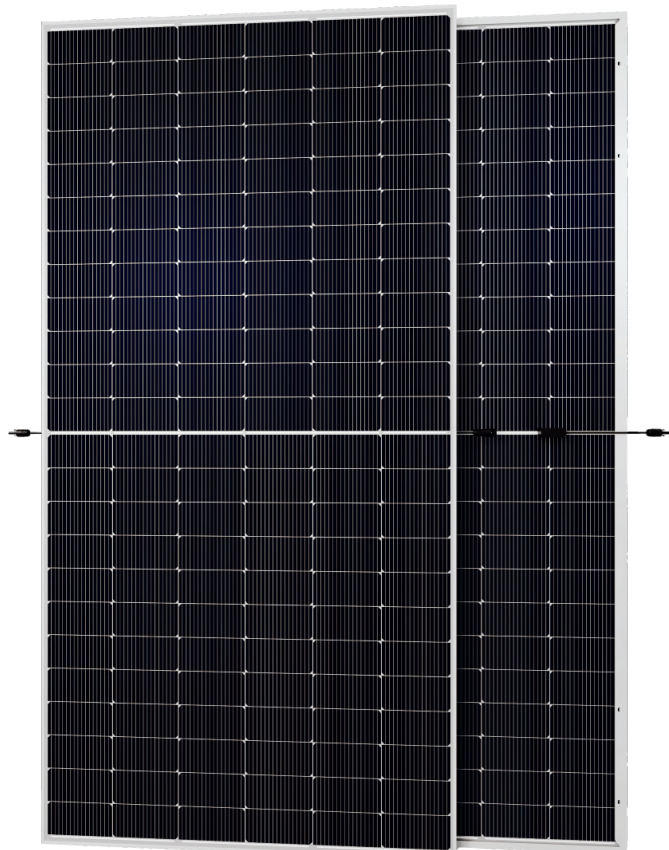
Topcon Technology

POWER RANGE
550W ~ 590W

CELL SIZE
182*91mm

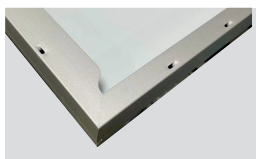


16BB



JUNCTION BOX

Waterproof protection grade: IP68
Safety Level: Class II
Maximum System Voltage: 1500V
Outstanding Waterproof level
Effectively resist harsh environments



FRAME

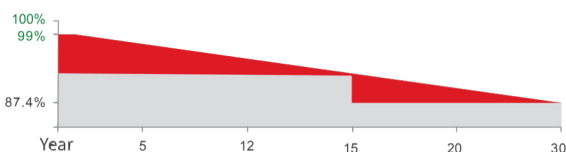
Strong mechanical load resistance up to 5400Pa
Anodic oxidation layer resistant to chemical corrosion available

QUALIFICATIONS AND CERTIFICATES



• IEC61215 / • IEC61730

WARRANTY



15 YEARS Guarantee on product material and workmanship

30 YEARS Linear Power output warranty



SMBB TECHNOLOGY

Better light trapping and current collection to improve module power output and reliability.



PID RESISTANCE

Excellent Anti-PID performance guarantee via optimized mass-production process and materials control.



HIGHER POWER OUTPUT

Module power increases 5-25% generally, bringing significantly lower LCOE and higher IRR.



ENHANCED MECHANICAL LOAD

Certified to withstand: wind load (2400 Pascal) and snow load (5400 Pascal).

ARM POWER
www.armpakpower.com

Welcome to ARM POWER, your trusted partner in innovative energy solutions. With a relentless commitment to excellence and a strong focus on research and development (R&D), we are dedicated to transforming the energy landscape to meet the challenges of today and tomorrow. Established in 2015, our journey of innovation continues, driving us towards a sustainable and efficient energy future.

ELECTRICAL DATA (STC)

Model Type	550W-36V-MHD	555W-36V-MHD	560W-36V-MHD	565W-36V-MHD	570W-36V-MHD	575W-36V-MHD	580W-36V-MHD	585W-36V-MHD	590W-36V-MHD
Peak Power (Pmax)	550.00	555.00	560.00	565.00	570.00	575.00	580.00	585.00	590.00
Maximum Power Voltage (Vmp)	41.50	41.64	41.77	41.92	42.07	42.22	42.37	42.52	42.67
Maximum Power Current(Imp)	13.26	13.33	13.41	13.48	13.55	13.62	13.69	13.76	13.83
Open Circuit Voltage(Voc)	50.21±3%	50.34±3%	50.47±3%	50.60±3%	50.74±3%	50.88±3%	51.02±3%	51.16±3%	51.41±3%
Short Circuit Current(Isc)	14.00±3%	14.07±3%	14.15±3%	14.23±3%	14.31±3%	14.39±3%	14.47±3%	14.55±3%	14.62±3%
Module Efficiency(%)	21.29	21.48	21.68	21.87	22.07	22.26	22.45	22.64	22.83

*STC: irradiance 1000W/m², AM1.5, and cell temperature of 25°C

ELECTRICAL DATA (NMOT)

Model Type	550W-36V-MHD	555W-36V-MHD	560W-36V-MHD	565W-36V-MHD	570W-36V-MHD	575W-36V-MHD	580W-36V-MHD	585W-36V-MHD	590W-36V-MHD
Peak Power (Pmax)	413.00	417.00	421.00	425.00	429.00	433.00	437.00	441.00	445.00
Maximum Power Voltage (Vmp)	38.99	39.12	39.25	39.38	39.51	39.64	39.77	39.90	40.03
Maximum Power Current(Imp)	10.61	10.67	10.73	10.79	10.85	10.91	10.97	11.06	11.12
Open Circuit Voltage(Voc)	47.70±3%	47.82±3%	47.94±3%	48.06±3%	48.20±3%	48.32±3%	84.46±3%	48.59±3%	48.72±3%
Short Circuit Current(Isc)	11.30±3%	11.36±3%	11.42±3%	11.49±3%	11.55±3%	11.61±3%	11.68±3%	11.77±3%	11.83±3%

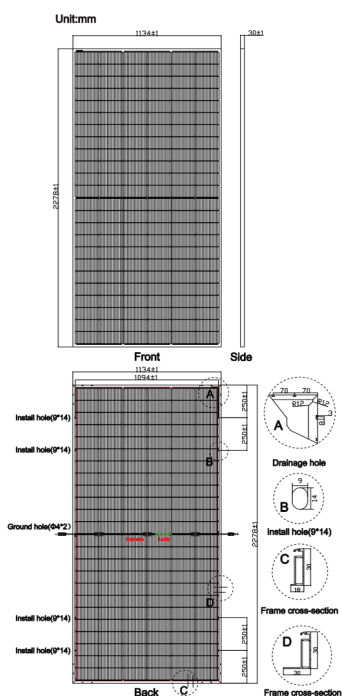
*NMOT: IRRADIANCE 800W/m², AM 1.5, ambient temperature 20°C, wind speed 1m/s

ELECTRICAL DATA (BNPI)

Model Type	550W-36V-MHD	555W-36V-MHD	560W-36V-MHD	565W-36V-MHD	570W-36V-MHD	575W-36V-MHD	580W-36V-MHD	585W-36V-MHD	590W-36V-MHD
Peak Power (Pmax)	609.00	615.00	620.00	626.00	632.00	637.00	643.00	648.00	654.00
Maximum Power Voltage (Vmp)	41.50	41.64	41.77	41.92	42.07	42.22	42.37	42.52	42.67
Maximum Power Current(Imp)	14.69	14.77	14.86	14.94	15.01	15.09	15.18	15.24	15.33
Open Circuit Voltage(Voc)	50.21±3%	50.34±3%	50.47±3%	50.60±3%	50.74±3%	50.88±3%	51.02±3%	51.16±3%	51.41±3%
Short Circuit Current(Isc)	15.51±3%	15.59±3%	15.68±3%	15.77±3%	15.86±3%	15.94±3%	16.03±3%	16.12±3%	16.21±3%

*BNPI: back irradiance 135W/m², AM1.5, and cell temperature of 25°C

PV DRAWING



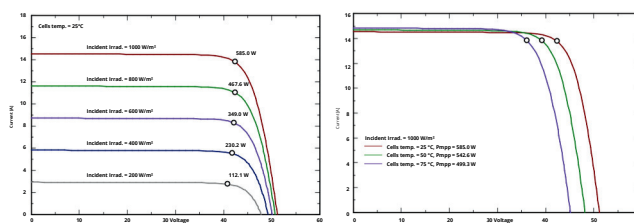
TEMPERATURE & MAXIMUM RATING

Maximum System Voltage (V)	1500
Maximum Series Fuse Rating (A)	30
Power Tolerance (W)	0~+3%
Pmax Temperature Coefficients (W/°C)	-0.290%
Voc Temperature Coefficients (V/°C)	-0.250%
Isc Temperature Coefficients (A/°C)	+0.041%
NMOT Nominal Module Operating Temperature (°C)	45±2
Operating and Storage Temperature (°C)	-40~+85

MECHANICAL CHARACTERISTICS

Cell Type	182*91 N Type Bifacial Mono
No. of Cells	144 (12*12)
Dimensions	2278*1134*30mm
Weight	32.00kg
Front Glass	2.0mm AR coating tempered glass
Back Glass	2.0mm Glazed Glass
Frame	Anodized Aluminium Alloy
Junction Box	IP68 3diodes
Output Cables	4mm ² cable 150cm(including MCR connector)
MaxWind Load/Snow Load	2400Pa/5400Pa

IV CURVE (585W)



PACKING WAY

20FT container	5 Packages/185pcs
40HQ container	20 Packages/740pcs